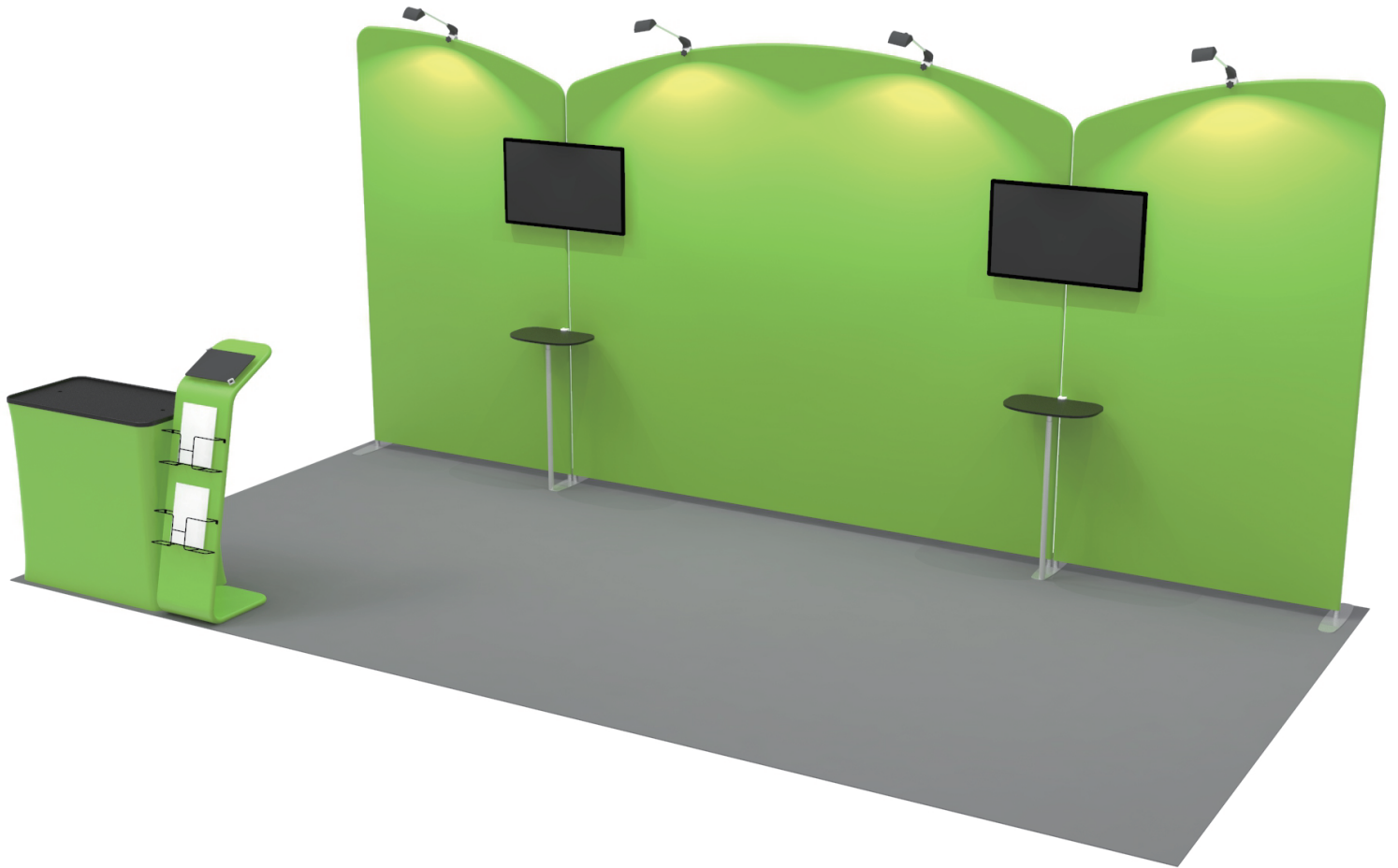


INSTRUCTION



10X20FT-BOOTH-02

STEPS

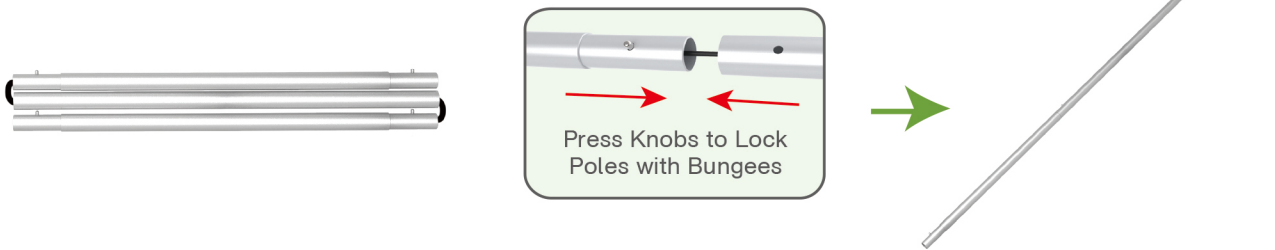
(1) Hardware



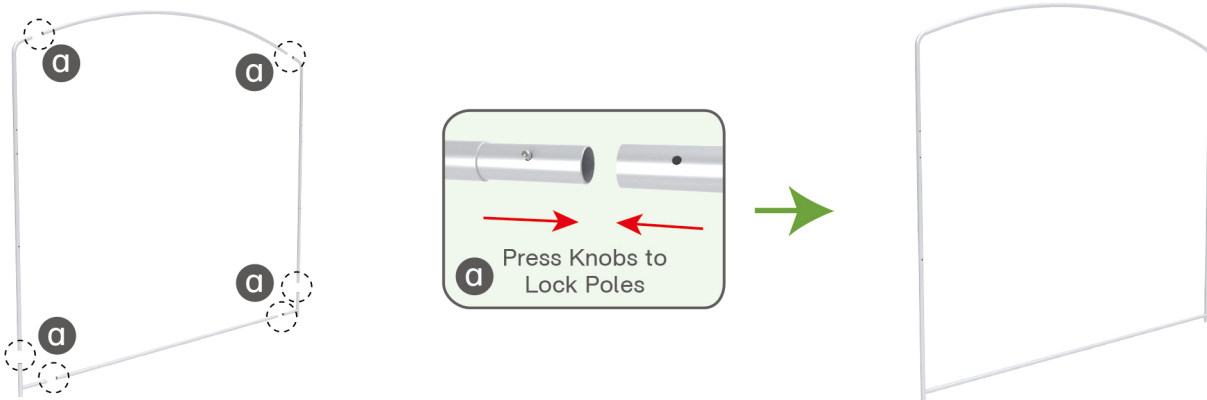
(2) Printed Graphic Fabric Banner (Optional)



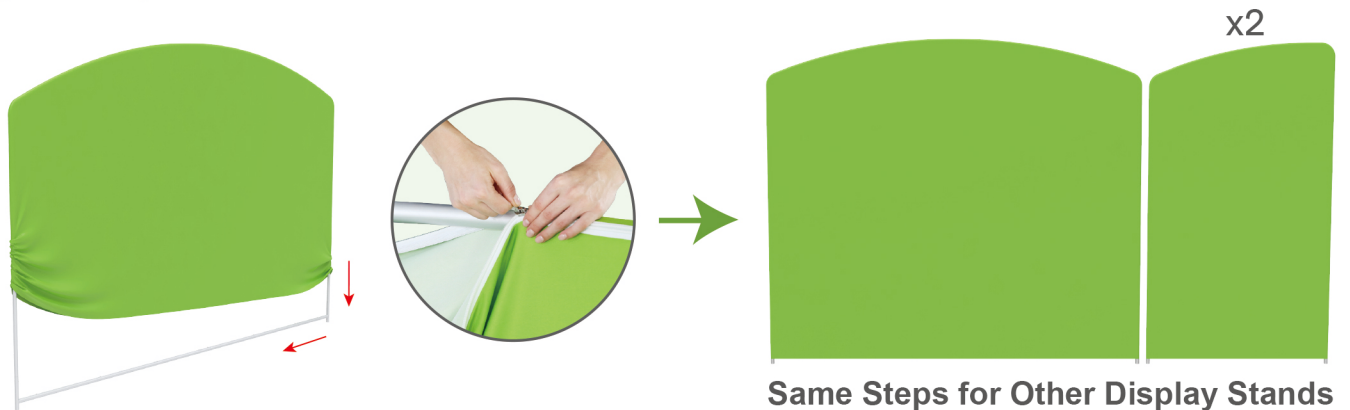
STEP 01 Connect to make long poles according to labelings.



STEP 02 Connect long poles with corner poles according to labelings.

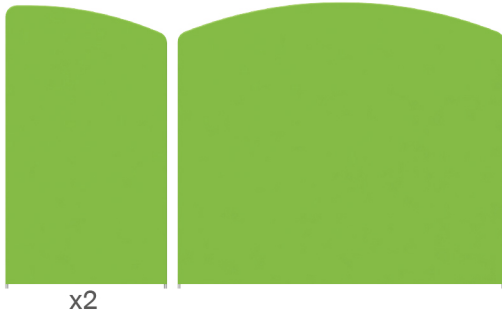


STEP 03 Slide fabric banner on frame from top and zip up at bottom.



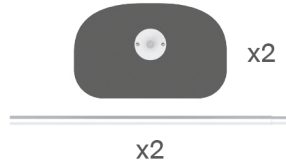
STEPS

Booth Set Assembly



x2

(4) MDF Board Table



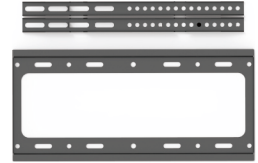
x2

x2



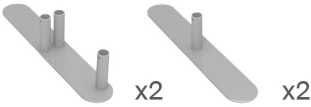
x2

(5) TV Mount



x2

(1) Base



x2

x2

(2) LED Light & Clip



x4

x4

(3) 180° C-Shaped Clip

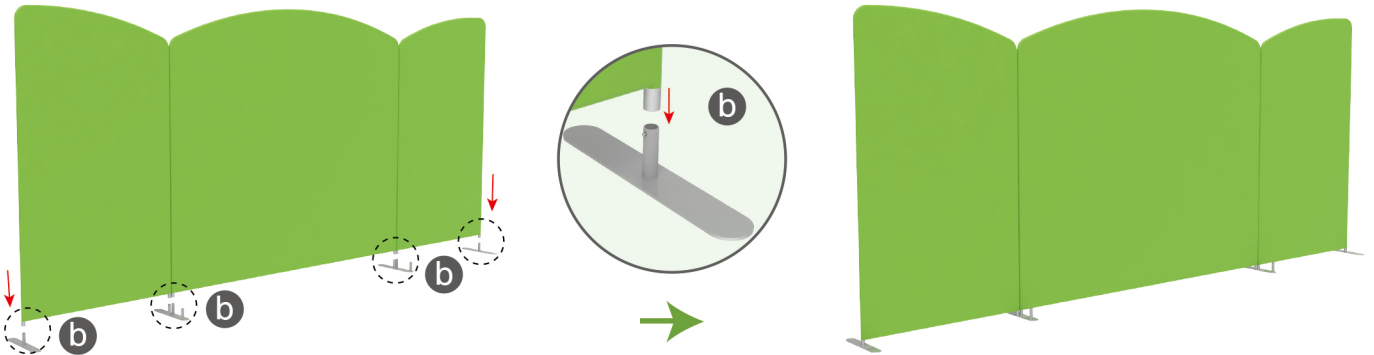


x4



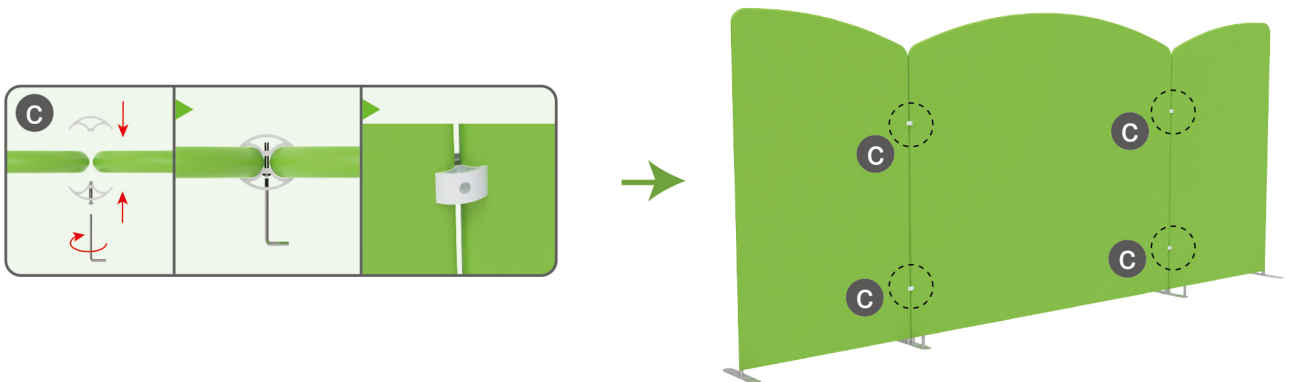
STEP 01

Insert display stands onto feet by pressing their knobs.



STEP 02

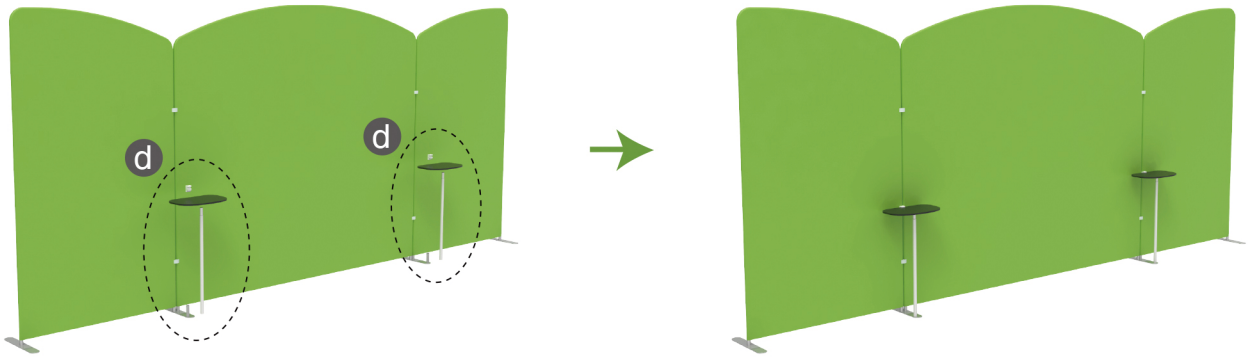
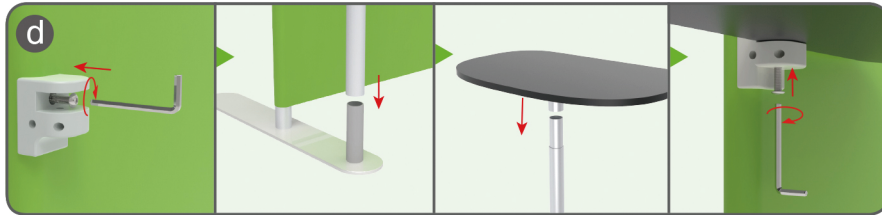
Interconnect display stands with C-shaped clips.



STEPS

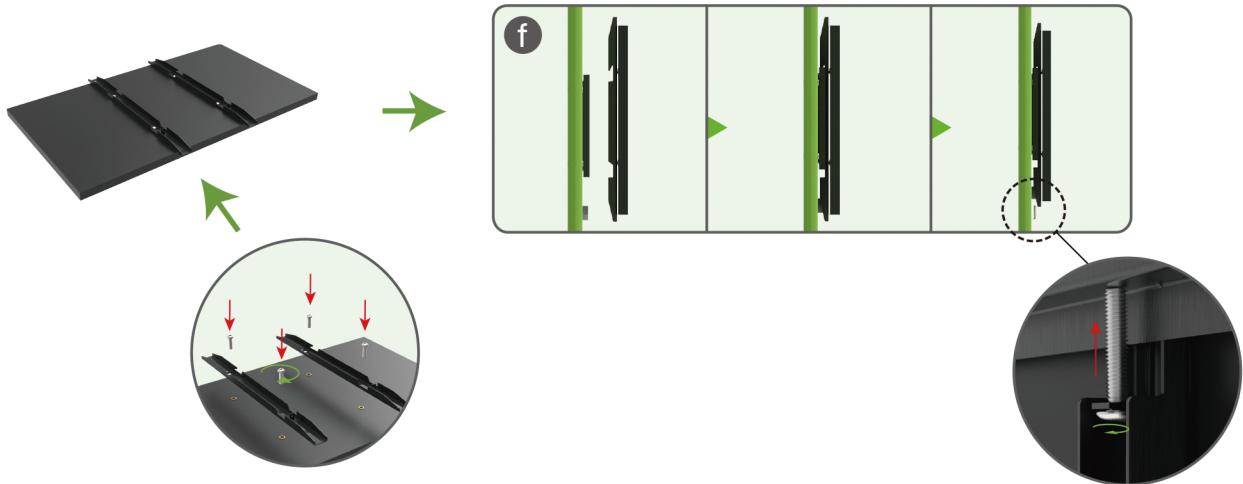
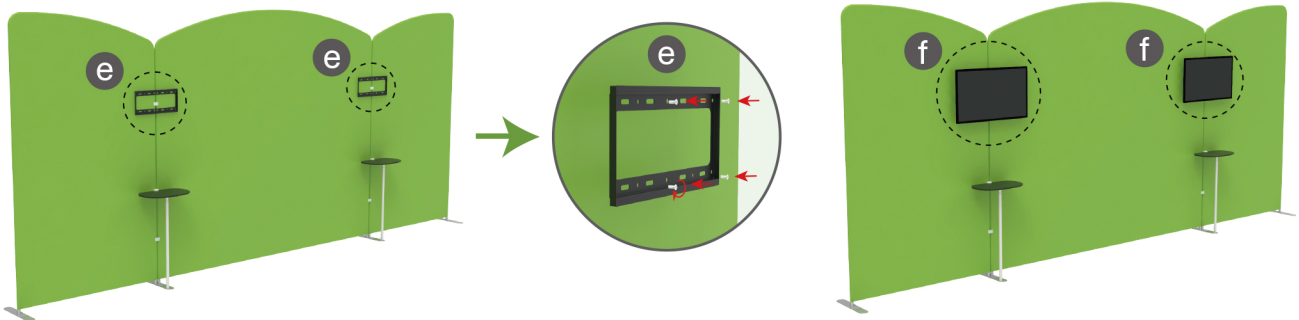
STEP 03

Insert pole into base, screw clamp with hex wrench, place MDF board onto pole & insert into clamp with screw.



STEP 04

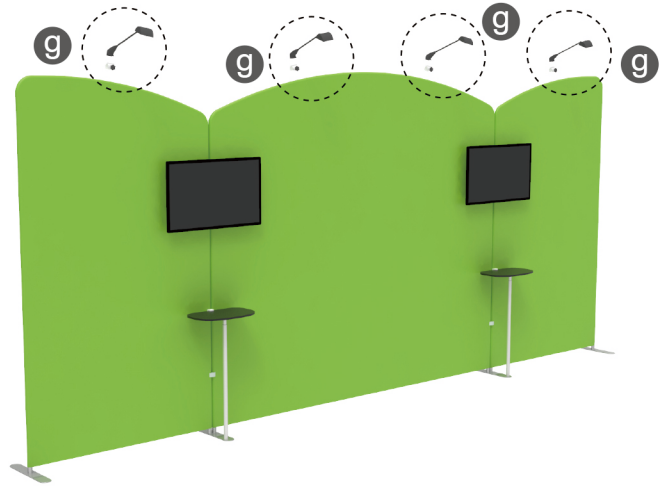
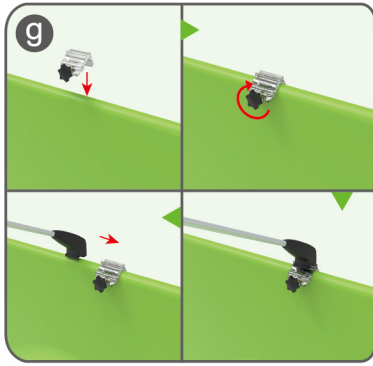
Screw TV mount with hex wrench.



STEPS

STEP 05

Screw light clips at top of display stands, slide lights onto them and adjust their direction.



10X20FT-BOOTH-02

STEPS

(1) Durable Plastic Hard Case, Aluminum Support Poles

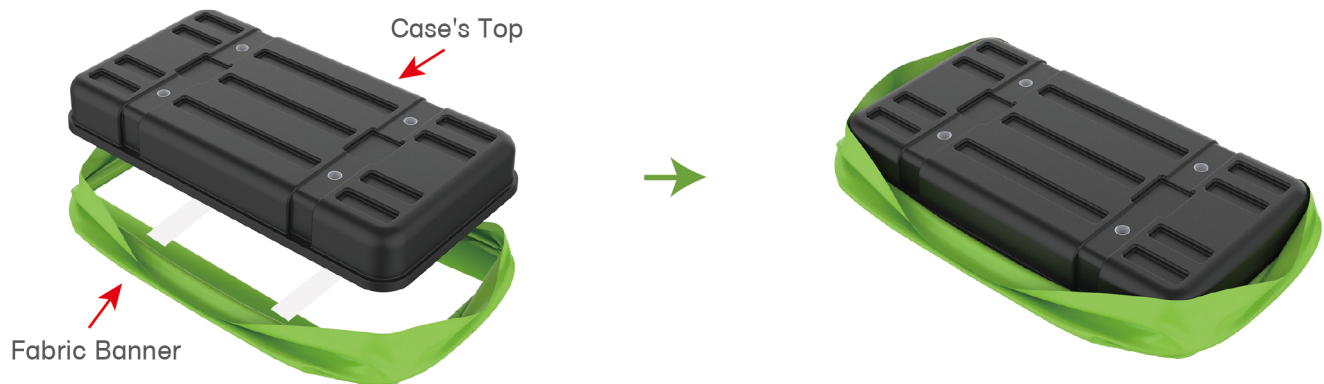


(2) Printed Graphic Fabric Banner



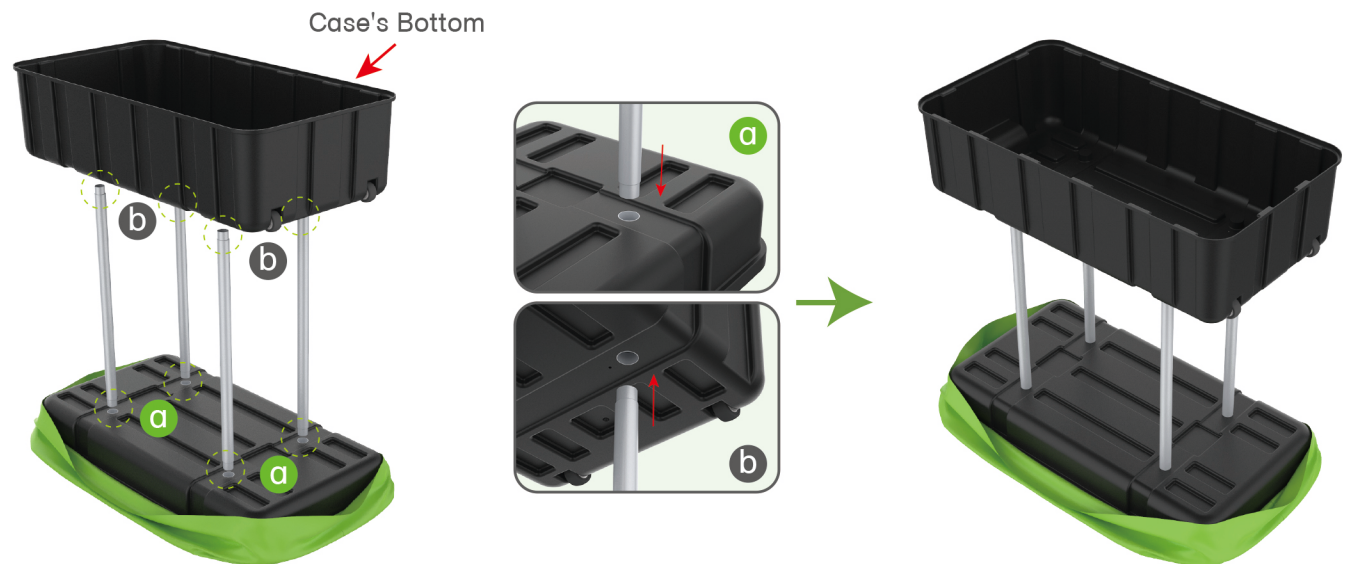
STEP 01

Put hard case's top into fabric banner.



STEP 02

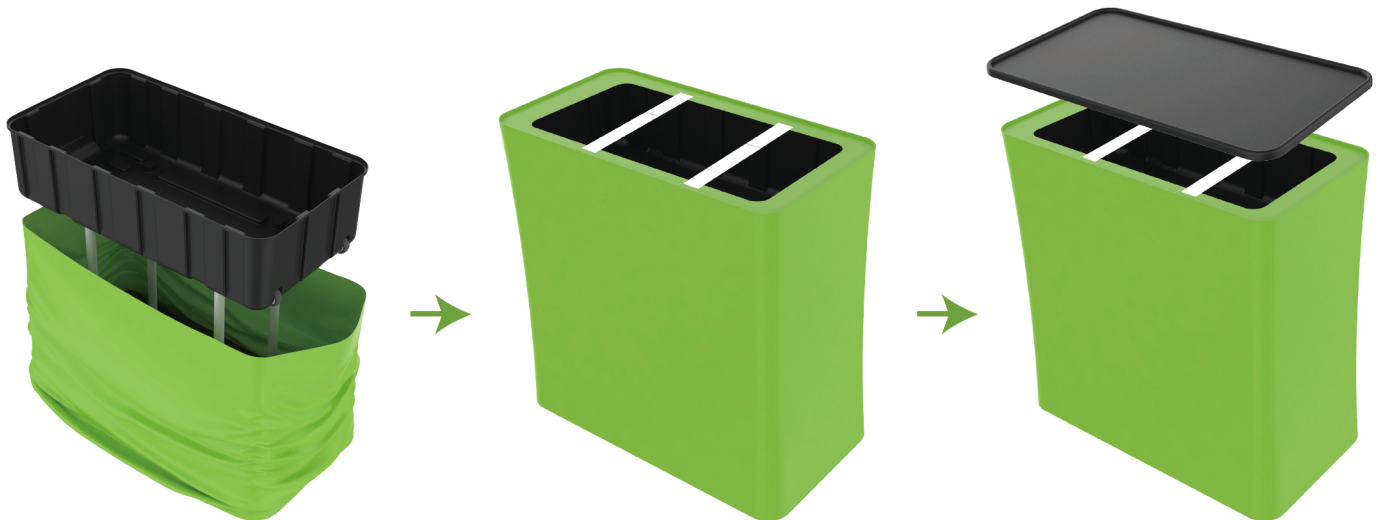
Insert support poles into hard case's top & bottom.



STEPS

STEP 04

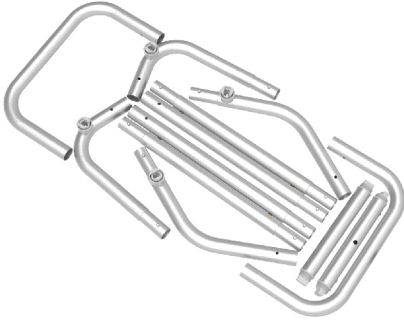
Wrap fabric banner from bottom to top & twist it to be smooth, lay hard case's intermediate panel on podium's top.



★ One Tool (Hex Wrench) 

STEPS

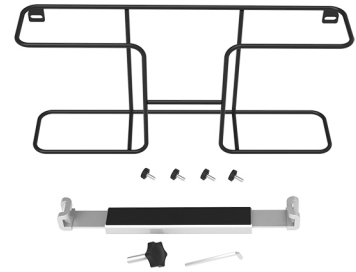
(1) Snap Tubes



(2) Printed fabric banner

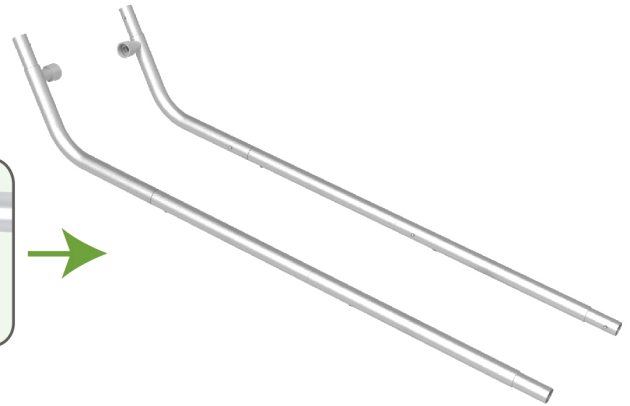
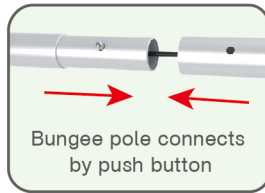


(3) Brochure rack x 2 / Screws x 4
Tablet PC holder x1



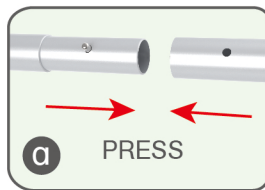
STEP 01

To Connect the tubes according to the labellings



STEP 02

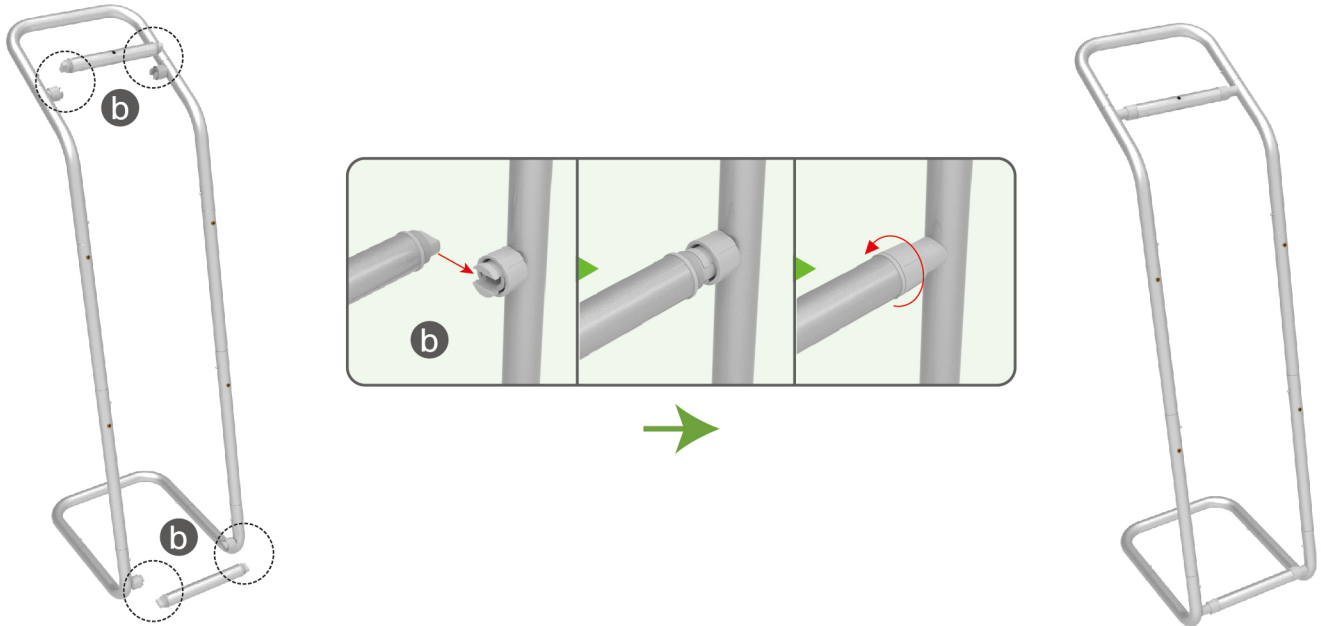
To connect 2 long side tubes by the corner pieces



STEPS

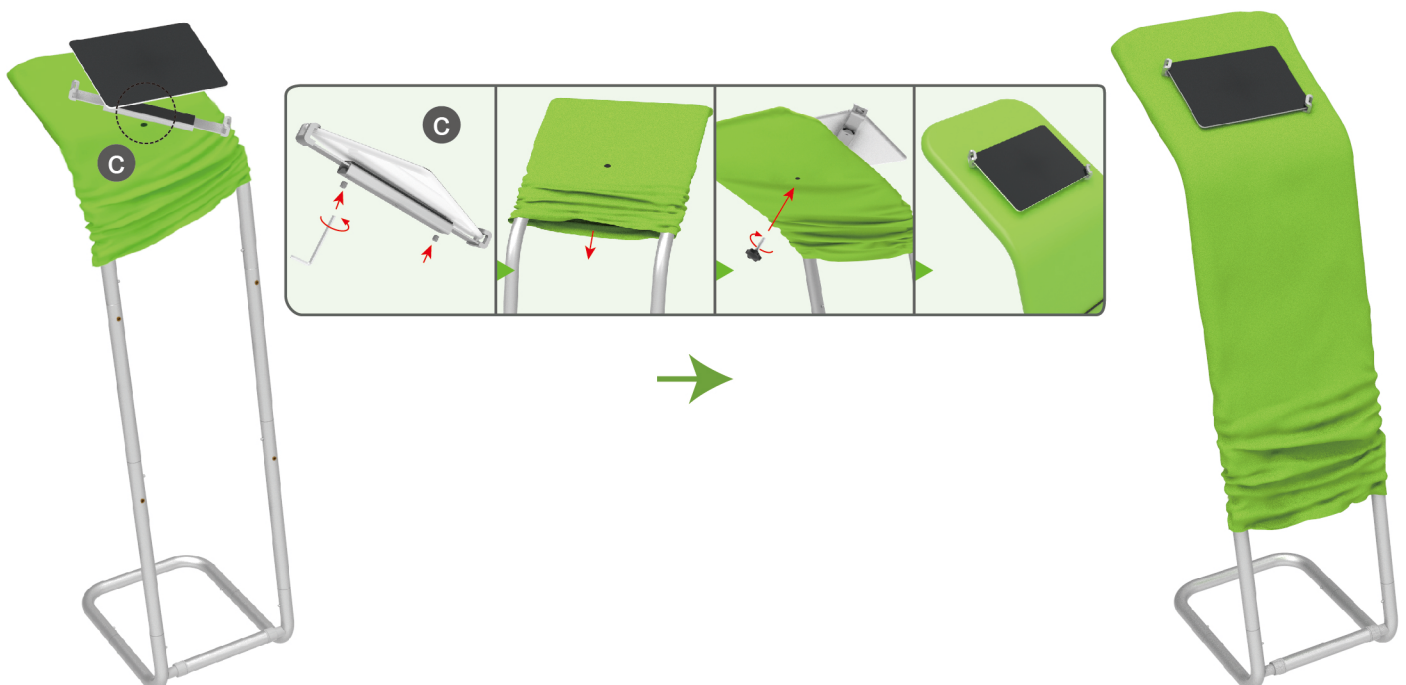
STEP 03

To install the cross bar according to labellings



STEP 04

To wrap the fabric from top to the middle of frame, then put the iPad in the holder and adjust the holder to right size and lock it by Allen Key Afterwards, install the set to the display stand.



STEPS

STEP 05

To pull the fabric banner to bottom and zip up.



STEP 06

To Install 2 racks by screws in position

